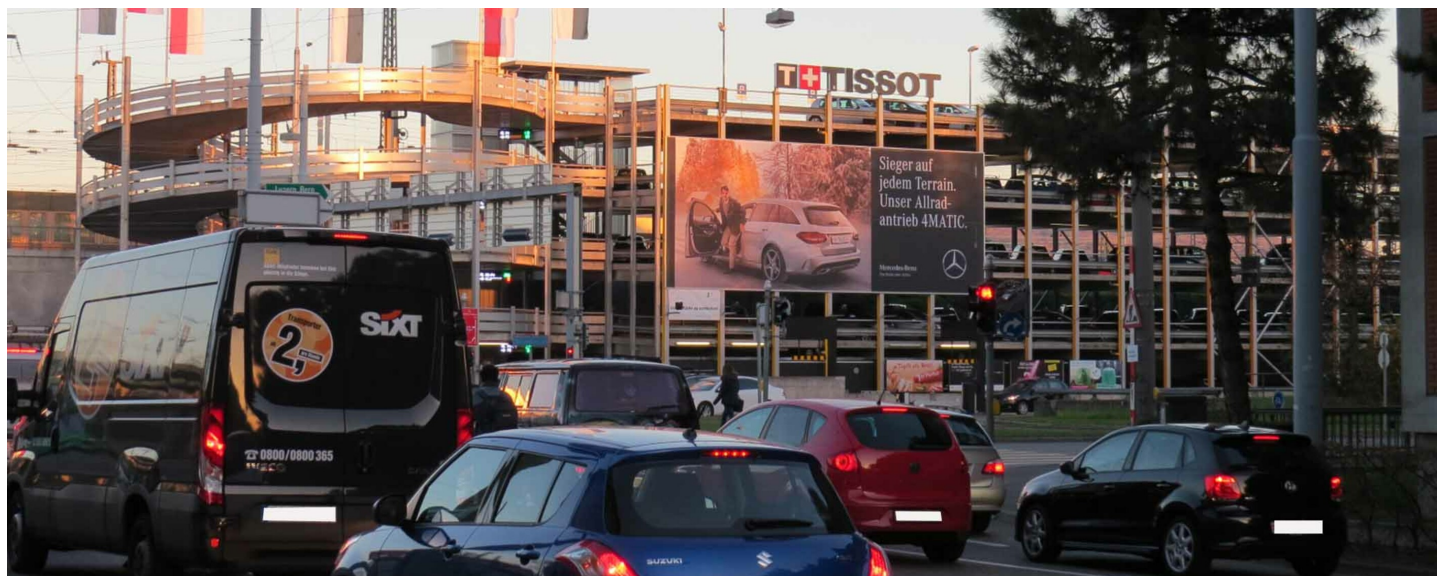


BASEL, PARKING BAD. BAHNHOF, SURFACE 1 (VALID FOR ALL EXIBITON EXCL. BASELWORLD)



FACTS AND FIGURES	
Dimensions	W 15.18 m x H 5.87 m
Total size	89.11 m2
Availability	Permanent
Illumination	yes
Frequency per trade fairs	400'000
Visibility	Front, sideways/oblique

- LOCATION | DESCRIPTION**
- Visible to customers on their way to and from the site
 - Motorway exit for the exhibition centre, Stüchi Shopping, Badischer Bahnhof, St. Jakob-Park Shopping, Motorway A2
 - High traffic volumes
 - Nearby IBM, F. Hoffmann-La Roche, Novartis, Syngenta Tower, McDonalds, Tinguely Museum etc.
 - Congestion area year-round
 - Stop and go (traffic lights = long viewing times)
 - Possibility to combine with the 8 flags above parking entrance

PERMISSION

- Outline approval existing, individual artwork requires authorization

- RESTRICTIONS**
- No restrictions concerning the number of words
 - No alcohol and tobacco advertising

