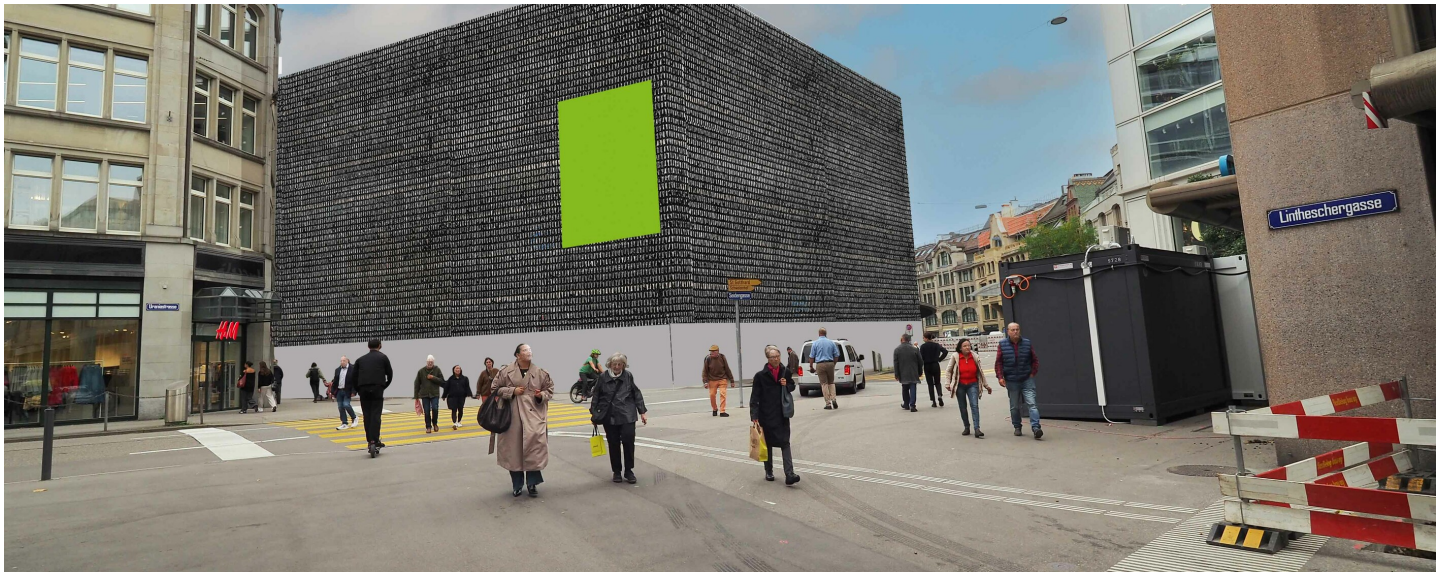


# ZURICH, JELMOLI, SURFACE 1, SIDE URANIASTRASSE, SEIDENGASSE

## Seidengasse 1



### FACTS AND FIGURES

Dimensions	ca. W 5.90 m x H 7.70 m
Total size	ca. 45.43 m2
Availability	ca. 26/06/2025 till 01/08/2027
Illumination	Not available
Frequency per month	ca. 1'883'000
Visibility	Front

### LOCATION | DESCRIPTION

- Jelmolli-building, directly next to the C&A building, short distance to Globus
- Directly in the city of Zurich / shopping, promenade and nightlife area
- Frontal view for the traffic, frontal view for pedestrians
- 30 meters away from Bahnhofstrasse, instant sight after crossing Bahnhofstrasse
- Main connection street from the city to Sihlporte, Casino Zurich, distributor road to highway Chur, Berne/Basel, to Pelikanplatz and parking garage Jelmolli
- High traffic and pedestrian volume
- In the radius of 300m are a lot of banks based

### PERMISSION

- Outline approval existing, individual artwork requires authorization

### RESTRICTIONS

- One simple visual, containing straight forward details, max. 3 words + logo + web url
- No advertising in the sectors of religion, tobacco, politics, alcoholic beverages and sex
- No advertising for property companies. Competitors to tenants of the property on request



### SITUATION PLAN

[Google Map](#)

Seidengasse 1